

PRIDD

Patient-Reported Impact of Dermatological Diseases

The only fully **validated**
dermatology **impact measure**
applicable to all skin conditions!

SKIN MATTERS

...and now you can measure its impact on patients' lives

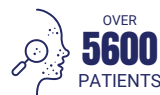
pridd.org

The first **PROM** in dermatology
to be developed and **validated** in
partnership **with patients**



96

COUNTRIES



OVER
5600
PATIENTS



OVER
7
YEARS

PRIDD was developed over seven years by Cardiff University, University of Hamburg, and GlobalSkin, in partnership with over 5600 patients worldwide.



CARDIFF
UNIVERSITY



pridd.org

EVERY STAGE OF PRIDD'S
DEVELOPMENT IS PUBLISHED IN
HIGH-RANKING PEER-REVIEWED
JOURNALS:

PHASE 1: COSMIN Systematic Literature review

- Patient-Reported Outcome Measures in Dermatology: A Systematic Review. Acta Derm Venereol. 2021; 101(9): adv00559.

PHASE 2: Development of conceptual framework

- Development of a Conceptual Framework for a Patient-Reported Impact of Dermatological Diseases (PRIDD) Measure: A Qualitative Concept Elicitation Study. Acta Derm Venereol. 2022; 102:adv00823.

PHASE 3: Patient prioritization of impacts (Delphi study)

- Patient prioritisation of impact items to develop the patient-reported impact of dermatological diseases (PRIDD) measure: European Delphi data. J Eur Acad Dermatol Venereol. 2023; 37 Suppl 7:40-50.
- Patient prioritisation of items to develop the Patient-Reported Impact of Dermatological Diseases measure: A global Delphi study. J Eur Acad Dermatol Venereol. 2024; 38(7):1391-1400.

PHASE 4: Psychometric testing & finalizing PRIDD

- Evidence of the content validity, acceptability, and feasibility of a new Patient-Reported Impact of Dermatological Diseases measure. Front Med (Lausanne). 2023; 10:1020523.
- Further refinement of the Patient-Reported Impact of Dermatological Diseases (PRIDD) measure using classical test theory and item response theory. Br J Dermatol. 2024; 190(5):718-728.
- Measurement properties and interpretability of the Patient-Reported Impact of Dermatological Diseases (PRIDD) measure. Br J Dermatol. 2024.



Scan to read the
publications

EVERY STAGE OF PRIDD'S DEVELOPMENT IS PUBLISHED IN HIGH-RANKING PEER-REVIEWED JOURNALS:

What does PRIDD measure?

PRIDD is comprised of 16 items, each rated on a scale ranging from "never" to "always".

It's a **comprehensive** and **multidimensional** measure that provides a total impact score, as well as scores for **four impact dimensions**:



PHYSICAL



LIFE RESPONSIBILITIES



SOCIAL



PSYCHOLOGICAL

PRIDD is a new and unique measure of the impact of dermatological diseases on the patient's life. It's for use with adult patients with any dermatological condition in research and clinical practice worldwide. PRIDD is:

VALID AND RELIABLE



EXTENSIVELY PUBLISHED



REFLECTS TRUE BURDEN OF ALL SKIN DISEASES



16 QUESTIONS IN LESS THAN 2 MINUTES



AVAILABLE IN 15+ LANGUAGES



To aid interpretation, PRIDD scores are banded into none, mild, moderate, severe, and very severe impact.

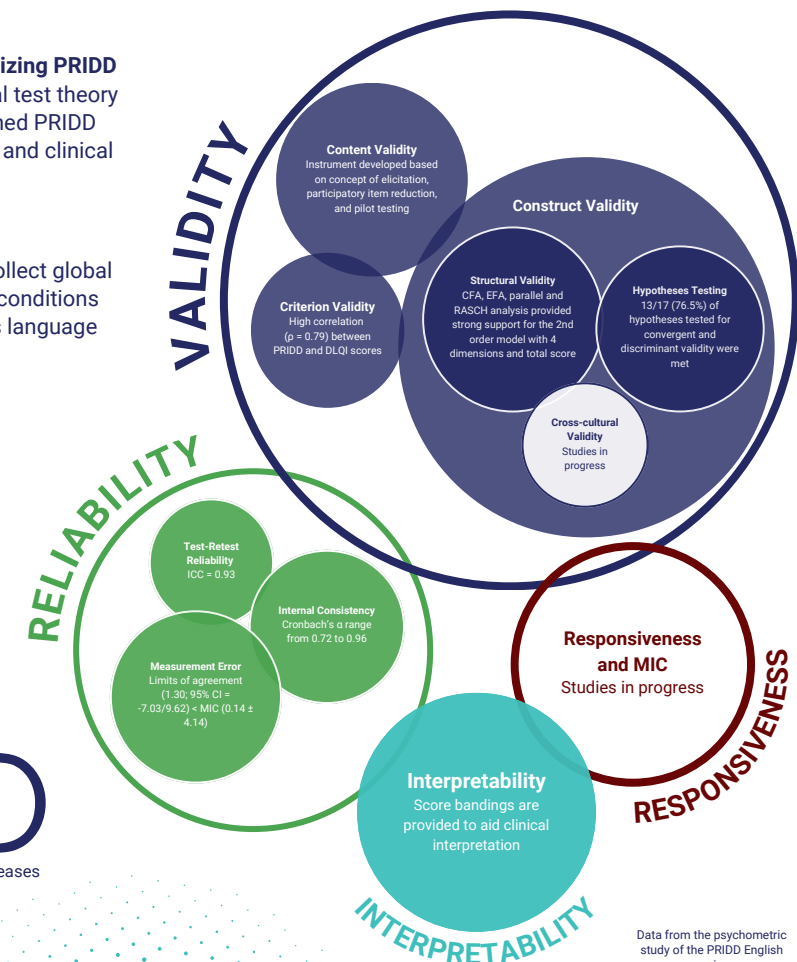
How was PRIDD developed?

- 2017-18** • **PHASE 1: COSMIN systematic review**
Identified no dermatology-specific PROM of life impact currently recommended according to the COSMIN standards
- 2019-20** • **PHASE 2: Qualitative concept elicitation study**
Found impact to be a multifaceted construct presenting across physical, psychological, social, financial, daily life and healthcare domains
- 2020-21** • **PHASE 3: Delphi study**
Developed the first draft of PRIDD based on patients' consensus on two-part prioritization of impact items
- 2021-22** • **PHASE 4: Psychometric testing & finalizing PRIDD**
Refined the measure based on classical test theory and item response theory and established PRIDD as a valid and reliable tool for research and clinical practice
- 2023-24+** • **PHASE 5: The global GRIDD Study**
First real-world study using PRIDD to collect global data on impact across dermatological conditions and to cross-culturally validate PRIDD's language versions

Why use PRIDD in research?

PRIDD accurately captures patients' lived experiences.

It is the only **life impact measure** in dermatology that **meets all tested psychometric criteria** and is **recommended for use** according to the Consensus-based Standards for the Selection of Health Measurement Instruments (COSMIN) standards.



PRIDD

Patient-Reported Impact of Dermatological Diseases

pridd.org

Data from the psychometric study of the PRIDD English version.